

光学检查机
Optical inspection machine

自动包装机
Automatic packaging machine

自动上料机成套设备提供商
Complete equipment supplier of automatic feeder



中精科智能科技(宁波)有限公司
Zhongjingke Intelligent Technology (Ningbo) Co., Ltd.

地址：浙江省宁波市镇海区镇骆东路1218号

Add : No. 1218, East Zhenluo Road,
ZhenHai District, NingBo, Zhejiang, China

手机/Mob : 15158319186(程经理)

电话/Tel : 0574-86276311

传真/Fax : 0574-86277424

邮箱/E-Mail : samcheng@zjkccd.com

网址/Web : www.zjkccd.com

中精科智能科技(宁波)有限公司
Zhongjingke Intelligent Technology (Ningbo) Co., Ltd.

ENTERPRISE INTRODUCTION 企业简介

中精科智能科技是一家专业研发制造光学检测设备,专注于零部件的外观,尺寸,涡流自动化检测的技术企业,提供自动上料-自动检测-自动包装整套特色解决方案。公司本着品质第一,服务至上,持续创新的企业宗旨,以稳健的步伐为广大客户提供更多优质的检测解决方案。

Zhongjingke Intelligent Technology Co., Ltd. is a professional enterprise that develops and manufactures optical inspection equipment, focusing on the appearance, size and eddy current automatic inspection of parts and components. It provides automatic feeding-automatic inspection-automatic packaging complete set of special solutions. The company adheres to the enterprise tenet of "Quality First, Service Supreme, Continuous Innovation" and provides more quality testing solutions for customers at a steady pace.

中精科智能科技(宁波)有限公司
ZHONGJINGKE INTELLIGENT TECHNOLOGY (NINGBO) CO., LTD.



PRODUCTION ENVIRONMENT 生产环境



PRODUCTION
EQUIPMENT
生产设备

经营目标 Business objectives

创新技术、严求质量、用心服务、追求卓越，中精科智能累积的丰富经验，针对客户需求不断地提升质量，开发新型设备，提供搭载彩色相机，3D测量技术以及更便捷性操作的机台。对于各种零件的检测，能做到目视检测无法达到的高精度，增加零件的高附加价值。

中精科智能团队除了持续提供高水平的服务，更将进一步开发整合检测科技，朝向新时代工业4.0迈进！始终，走在检测最前端是我们的愿景。

Innovative technology, strict quality, attentive service, the pursuit of excellence, zhongjing intelligent accumulated rich experience, according to customer demand to continuously improve the quality, development of new equipment, provide equipped with color cameras, 3D measurement technology and more convenient operation of the machine. For the detection of various parts, can achieve visual detection can not achieve high precision, increase the parts of high added value. In addition to continuing to provide high level of service, the intelligent team will further develop integrated testing technology, towards the new era of industry 4.0! Always, go in the detection of the most advanced is our vision

产品展示 Product Display



玻璃盘影像检测机-LGS-1300/2300
Glass disk image detector-LGS-1300/2300



特点说明

Feature description

1. 利用玻璃的高透光性，待检物件可平稳放置于玻璃盘面者，皆可检测。
1. Using the high transparency of the glass, the object to be examined can be detected if it can be placed on the glass plate smoothly.
2. 可与玻璃盘下部增设光学硬件，通过高透光玻璃盘检测，适用于双面检测。
2. Can Add optical hardware with the lower part of the glass plate, through the high-transmittance glass plate detection, suitable for double-sided detection.
3. 检测范围：磁铁类、纽扣类、电容锂电池类、手机配件、探针连接器类、橡胶类、药片类、陶瓷类、五金类等精密零件。
3. detection Scope: Magnet Class, button class, capacitor lithium battery class, mobile phone accessories, probe connector class, rubber class, tablets class, ceramics class, hardware and other precision parts.
4. 可快速适用不同检测物件，不同物件只需更换振动盘即可。
4. can quickly apply to different detection objects, different objects only need to replace the vibration plate.
5. 检测速度：依待检物件而定，最高可达1200PCS/分钟。
5. Detection speed: Up to 1200 pcs per minute depending on the object to be examined.
6. 可根据客户产品检测需求，量身定制。
6. according to customer product testing needs, tailor-made.

玻璃盘影像检测机-PGS-1300/2300
Glass disk image detector-PGS-1300/2300



特点说明

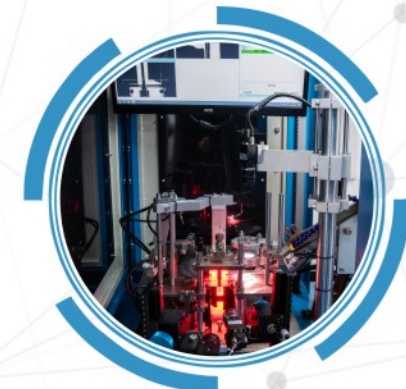
Feature description

- 1、适用于螺丝、螺母、垫片、O型圈、压簧、齿轮、等多款产品的外观、尺寸、混料检测及筛选。
- 2、可依据客户需求, 选配1-7只相机、涡电流检测项目、自动补料机、自动包装机等多款配套服务, 高效、有效的为客户解决品质带来的隐患。
- 3、自动生成SPC统计报表, 提供制程品质分析。
- 4、中英双语操作系统。

1. Apply to screw, nut, gasket, o-ring, pressure spring, gear, and other products appearance, size, mixture detection and screening.
2. according to customer demand, 1-7 cameras, Eddy current testing projects, automatic feeding machine, automatic packaging machine and other supporting services, efficient and effective for customers, solve, solve the quality problems.
3. automatically generate SPC statistical report, provide process quality, analysis.
4. Bilingual operating systems.

分度盘影像检测机-IPS-1300

Indexing disk image detector-IPS-1300



特点说明

Feature description

1.【检测项目】

头部检测:头部直径、电镀不良、真圆度、内孔径、同心度、孔塞、倒角直径及外径、表面检查、表面特征、对边、对角、外环裂、侧面特征、中空同心度、断针、塞孔、印记、旋转印记、一字印记、偏心距离、内部对边、内部对角、角度差等;
外螺牙检测:多段头高、多段头宽、头下长、螺丝总长、牙外径、牙距、谷距、牙角、牙品质、斜牙、头部形状、尾部形状、针孔深度等;
内螺牙检测:有无螺牙、牙距、耐落;

2.【检测速度】

300-100支/分

3.【设备精度】

±0.03mm

1. [Testing program]

Head detection: head diameter, plating defect, true roundness, inner aperture, concentricity, Cónce, chamfer diameter and outer diameter, surface inspection, surface characteristics, opposite side, diagonal, outer ring crack, side features, hollow concentricity, broken needle, plug hole, mark, rotary mark, monogram, eccentric, distance, internal opposite side, internal opposite angle, angle, etc.
External Screw Inspection: multi-segment head height, multi-segment head
External Screw Detection: multi-segment head height, multi-segment head width, head down length, screw total length, tooth diameter, tooth pitch, tooth angle, tooth quality, oblique teeth, head shape, tail shape, needle hole depth, etc.

Detection of internal thread: with or without thread, pitch and drop resistance;

2. [check speed]

300-100

3. [Device accuracy]

±0.03mm

连续式分度盘影像检测机-PLR-1300

Continuous indexing disc image detector-PLR-1300



特点说明

Feature description

- 1、检测螺栓,可以悬挂的杆件。
- 2、适用范围:M3-M16 长度10-120MM,速度200-900支/分。
- 3、可依据客户需求,选配1-16只相机可以结合,自动补料机、自动包装机等多款配套服务,高效、有效的为客户解决品质带来的隐患。
- 4、自动生成SPC统计报表,提供制程品质分析。
- 5、中英双语操作系统。

1. Detection Bolt, can be suspended Rod.
2. scope of application: M3-M16 length 10-120 mm, speed 200-900/Min.
3. according to customer demand, matching 1-16 cameras can be combined, automatic filling machine, automatic packaging machine and other ancillary services, efficient and effective to solve the quality problems for customers.
4. Automatically generate SPC statistical reports.

提升机HS1100 Hoist HS1100



特点说明

Feature description

1. 直立式提升机HS1100系列: 自动补料, 自动提升, 降低人工工作强度以及提高生产效率
2. 结适合范围外径2-50mm, 高度2-150mm
3. 供料速度可以调节, 最快2000支/分
4. 设备尺寸: 1300*800*2000mm
5. 中英双语操作系统
6. 节省空间, 无卡料造成二次损坏, 且会定量加料

1. Automatic feeding, automatic lifting, reduce manual work intensity, improve production efficiency.
2. The suitable diameter is 2-50 mm and the height is 2-150 mm
3. The feeding rate can be adjusted up to 2,000 BPM
4. 1300*800*2000mm
5. Chinese-english bilingual operating system
6. Save space, no card material to cause secondary damage, and will be quantitative feeding.

自动进出箱输送机DS305 Automatic box conveyor DS305



特点说明

Feature description

1. 自动进出箱输送机, 包括滚道, 动力装置及机架, 其显著特征在于, 所述滚道的一端下方设有进出料装置, 进出料装置包括无杆气缸。
2. 位于无杆气缸下部的气缸垫板, 与无杆气缸上部活塞滑块相连接的推拉杆, 推拉杆右部设有推承销导向座, 推承销导向座内部设有推承销。
3. 所述传动滚筒包括半辊滚筒和整辊滚筒, 两对应半辊滚筒之间设有间隙, 本实用新型的有益效果为: 该输送机既能实现两动力滚道的过渡。
4. 也能实现物料台与输送机之间的过渡, 能有效解决过渡不畅, 滚道损坏等问题, 且自动化程度高, 过渡过程平稳有序, 结构紧凑合理, 占用空间少。

1. An automatic in-and-out box conveyor, including a raceway, a power device and a machine frame, is characterized in that a material inlet and outlet device is arranged below one end of the raceway, and the material inlet and outlet device comprises a rodless Cylinder
2. and a cylinder cushion plate located at the lower part of the rodless cylinder, the push-pull rod is connected with the Piston slide block on the upper part of the rodless cylinder, and the right part of the push-pull rod is provided with a push-pull pin guide seat. The push-pull pin guide seat is internally provided with a push-pull Pin
3. The driving roller comprises a half-roller and a whole roller, and a gap is arranged between the two corresponding half-roller rollers. The utility model has the advantages that the transport machine can realize the transition of two dynamic raceways.
4. Also can realize the transition between the material table and the transport machine, can effectively solve the problems such as the transition is not smooth, raceway damage, and high degree of automation, smooth and orderly transition process, compact and reasonable structure, occupy less space

通规检测机 FI-11 Traverse Detector FI-11



特点说明

Feature description

1. 根据客户提供产品,通规,通棒进行非标设计;
2. 操作员只需将产品放入振动盘中其它由机器自动完成;
3. 检测机能检测内、外螺纹的通&止,检测扭力大小依国标,测试时扭力大小可在设定界面中自由设定;测试扭力在操作屏上能实时显示测试结果及判定结果;
4. 能检测产品有无牙;
5. 能检测螺纹的深度(不能给出具体深度尺寸,只能判定牙深是否到位);
6. 检测机不会损伤螺母的表面;
7. 检测通规和止规的过程中不会损伤螺纹;

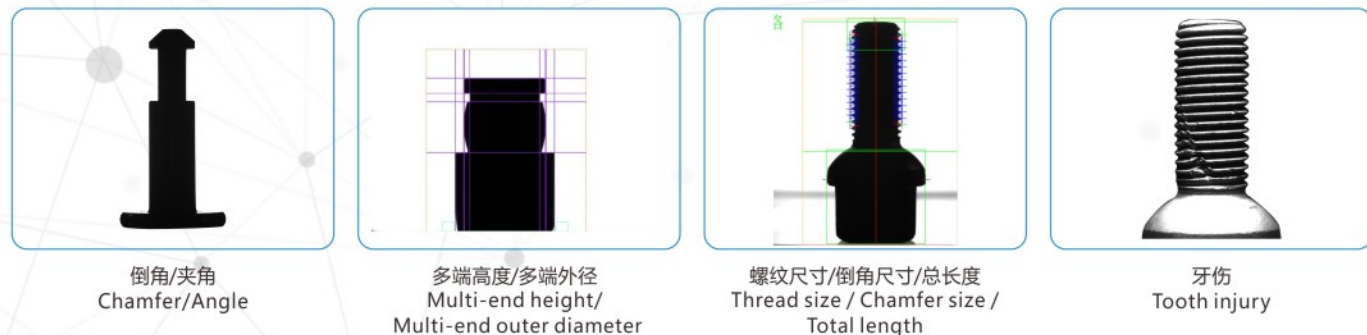
1. according to the customer to provide products, pass gauge, pass Bar non-standard design;
2. the operator just put the product into the vibration plate and other automatic completion by the machine;
3. the detection machine can detect the inside and outside threads of the Pass & Stop, testing torque size according to the national standard, testing torque size can be set freely in the setting interface; testing Torque can real-time display test results and judgment results on the operating screen;
4. can test whether the product has teeth;
5. can detect the depth of the thread (can not give a specific depth size, can only determine whether the tooth depth in place);
6. the detection machine will not damage the surface of the nut;
7. The thread will not be damaged in the process of testing the pass gauge and stop gauge;

8. 检测速度是10~80件支/分钟(根据检测产品的螺牙行程决定);
9. 当螺牙检测NG时,机器自动将不良品排除;
10. 检测机检测过的良品中100%没有不良品;
11. 检测机具备自动记录检测总数,检验良品数,检验不良品数以及良品率等
12. 检测机通止规当达到一定的数量,自动报警(检测数量可自由设定);
13. 如需更换不同的产品测试需更换振动盘顶盘及产品的定位块。
14. 全封闭防护框(工业铝型材,有机玻璃)

8. The testing speed is 10 ~ 80 pieces per minute (depending on the screw stroke of the testing product);
9. when the tooth detection Ng, the machine will automatically eliminate the defective goods;
10. the detector tested good goods 100% no defective goods,
11. the detector with, automatic record inspection total number, inspection good number, inspection bad number, as well as good rate, etc.
12. detector Tongzhi when a certain number of automatic alarm (detection number can be set freely);
13. If you need to change the different products test need to change the vibration plate top plate and the product positioning block.
14. Fully enclosed protective frame (industrial aluminum, plexiglass)

侧视CCD检测功能

Side View CCD detection function



倒角/夹角
Chamfer/Angle

多端高度/多端外径
Multi-end height/
Multi-end outer diameter

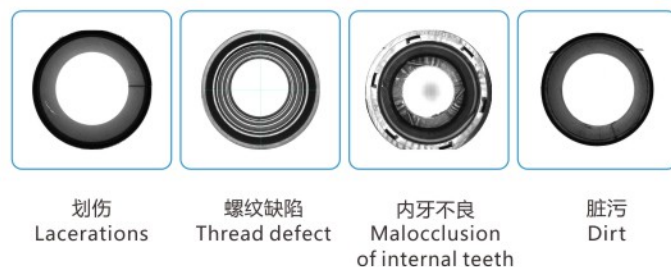
螺纹尺寸/倒角尺寸/总长度
Thread size / Chamfer size /
Total length

牙伤
Tooth injury

内外360CCD检测功能

Inside and outside 360 CCD detection function

内360度 Internal 360 degrees



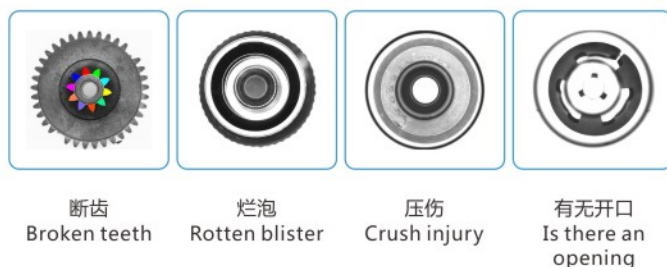
划伤
Lacerations

螺纹缺陷
Thread defect

内牙不良
Malocclusion
of internal teeth

脏污
Dirt

外360 Extra 360



断齿
Broken teeth

烂泡
Rotten blister

压伤
Crush injury

有无开口
Is there an
opening

上下视CCD检测功能

UP-DOWN CCD detection function

O型圈类 O-ring class



断裂
Crack

刮伤
Scratch

毛边
Rough Edge

电池盖 Battery cover

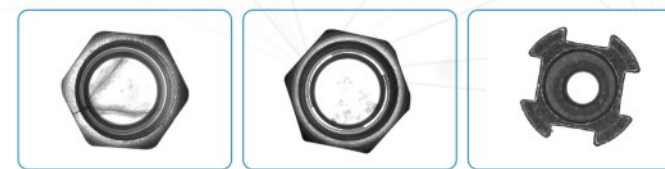


黑斑
Black spot

划伤
Lacerations

磕伤
Knocked wounded

螺母 Nuts

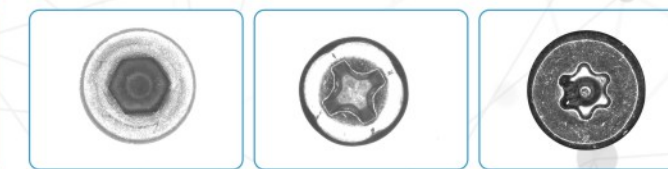


开裂
Crack

磕底色斑
Discolored ground

毛刺
burr

螺丝 Screw



划伤
Lacerations

开裂
Crack

孔内异物
Foreign Body in hole

电子零部件 Electronic components

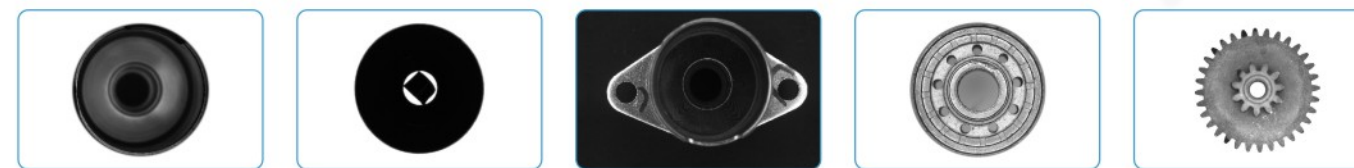


划伤
Lacerations

磕伤
Knocked wounded

压伤
Crush injury

粉末冶金 Powder metallurgy



边缘缺损
Marginal defect

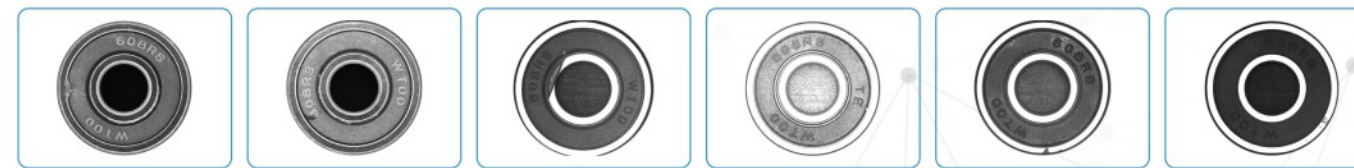
堵孔
Plugging Hole

划痕
Scratch marks

磕伤
Knocked wounded

缺角
Angular defect

轴承 Bearing



磕碰伤
Knocked wounded

密封圈气泡
Seal Ring Bubble

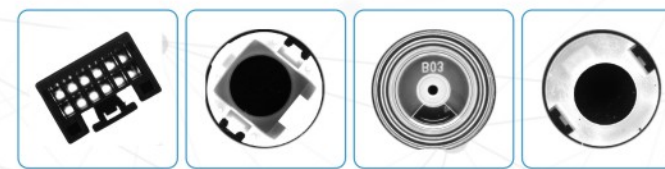
内圈缺口
Inner Ring Notch

外圈毛刺
Outer Ring Burr

外圈缺口
Outer Ring Notch

外圈生锈
Rust on the outside

塑料产品类 Plastic products



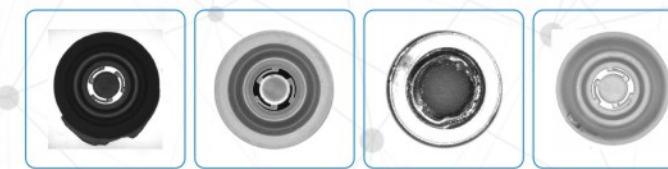
毛刺
burr

欠注
Under bet

溶胶
sol

脏污
Dirt

橡胶产品类 Rubber products



毛边
Rough Edge

缺料
Material shortage

溶胶
Sol

粘胶
Viscose